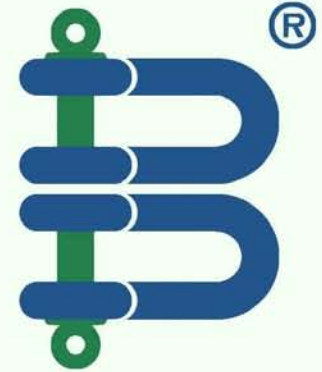
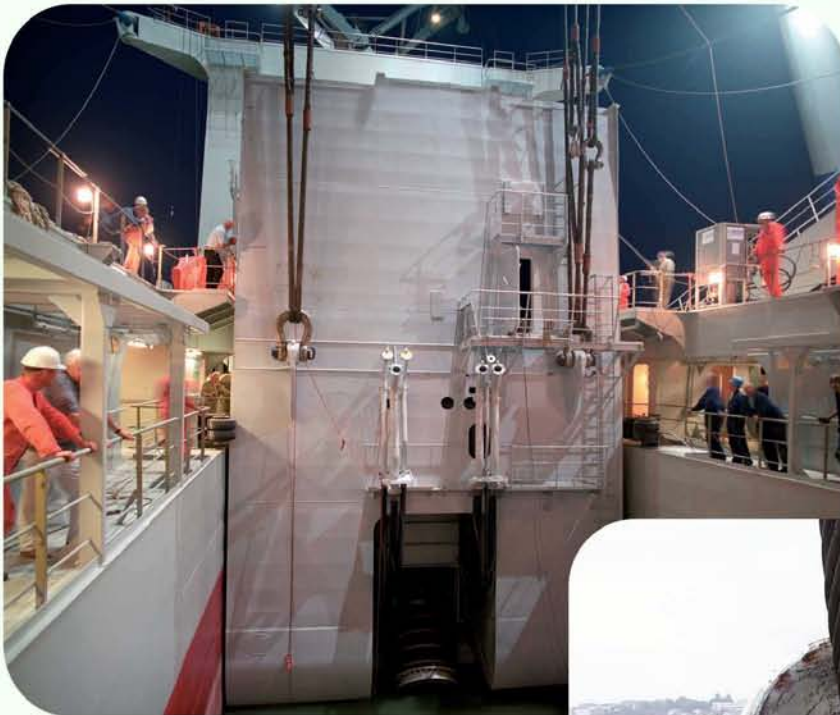


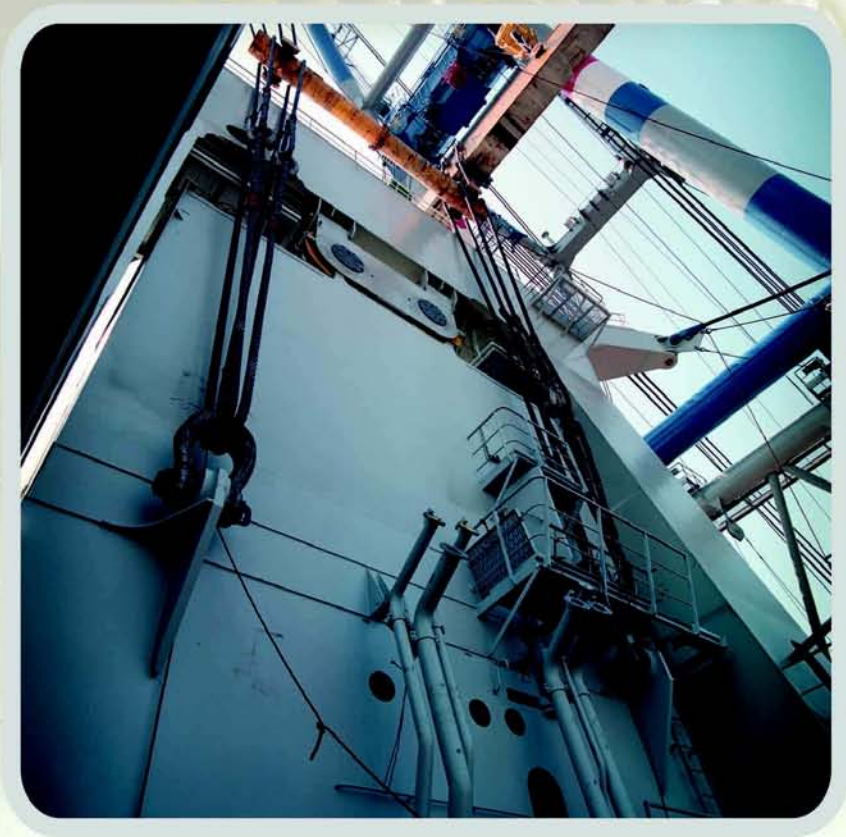
卸扣

VAN BEEST



荷兰GREEN PIN®系列卸扣



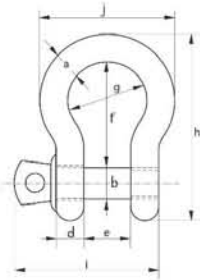


Holland Green Pin® Standard Shackles

荷兰 Green Pin® 卸扣



G-4161 弓型卸扣
ANCHOR SHACKLE WITH
SCREW COLLAR PIN



G-4161

- 材料：高强度钢，等级6，淬火及回火
- 安全系数：6
- 标准：符合欧洲EN 13889和美国联邦的性能要求Spec. RR-C-271 Type IVB Class 2, Grade A
- 表面：热浸镀锌
- 温度范围：-20 °C至+200 °C
- 证明：这个产品可免费提供工厂证书，基本的原材料证书、制造者测试证书和EC证书

- **Material** : bow and pin high tensile steel, Grade 6, quenched and tempered
- **Safety Factor** : MBL equals 6 x WLL
- **Standard** : EN 13889 and
meets performance requirements of US Fed. Spec. RR-C-271 Type IVB Class 2, Grade A
- **Finish** : hot dipped galvanized
- **Temperature Range** : -20 °C up to +200 °C
- **Certificates** : at no extra charges this product can be supplied with a works certificate, certificate of basic raw material, manufacturer test certificate and/or EC Declaration of Conformity

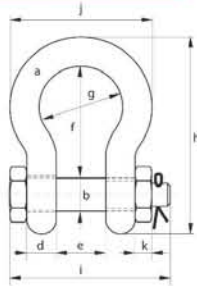
working load limit	diameter bow	diameter pin	diameter eye	width eye	width inside	length inside	width bow	length bow	length bolt	width	weight each
tons	a mm	b mm	c mm	d mm	e mm	f mm	g mm	h mm	i mm	j mm	kg
0.33	5	6	12.5	5	9.5	22	16	41	31	28	0.02
0.5	7	8	17	7	12	29	20	54	40	37	0.05
0.75	9	10	21	9	13.5	32	22	61	49	42	0.1
1	10	11	23	10	17	36.5	26	71	56	49	0.14
1.5	11	13	26	11	19	43	29	80	68	54	0.19
2	13.5	16	34	13.5	22	51	32	91	76	63	0.36
3.25	16	19	40	16	27	64	43	114	93	79	0.63
4.75	19	22	47	19	31	76	51	136	107	94	1.01
6.5	22	25	53	22	36	83	58	157	123	107	1.5
8.5	25	28	60	25	43	95	68	176	141	124	2.21
9.5	28	32	67	28	47	108	75	197	158	137	3.16
12	32	35	74	32	51	115	83	218	176	154	4.31
13.5	35	38	80	35	57	133	92	240	192	170	5.55
17	38	42	89	38	60	146	99	262	208	183	7.43
25	45	50	104	45	74	178	126	314	250	226	12.84
35	50	57	111	50	83	197	138	358	281	250	18.15
42.5	57	65	134	57	95	222	160	414	321	287	26.29
55	65	70	145	65	105	260	180	463	355	329	37.6

Holland Green Pin® Standard Shackles

荷兰 Green Pin® 卸扣



G-4163 弓型安全卸扣
SAFETY ANCHOR SHACKLE
BOLTTYPE



G-4163

- 材料 : 高强度钢, 等级6, 淬火及回火
- 安全系数 : 6
- 标准 : 符合欧洲EN 13889和美国联邦的性能要求Spec. RR-C-271 Type IVA Class 3, Grade A
- 表面 : 热浸镀锌
- 温度范围 : -20 ° C至+200 ° C
- 证明 : 这个产品可免费提供工厂证书, 基本的原材料证书、制造者测试证书和EC证书

- **Material** : bow and pin high tensile steel, Grade 6, quenched and tempered
- **Safety Factor** : MBL equals 6 x WLL
- **Standard** : EN 13889 and
meets performance requirements of US Fed. Spec. RR-C-271 Type IVA Class 3, Grade A
- **Finish** : hot dipped galvanized
- **Temperature Range** : -20 °C up to +200 °C
- **Certificates** : at no extra charges this product can be supplied with a works certificate, certificate of basic raw material, manufacturer test certificate and/or EC Declaration of Conformity

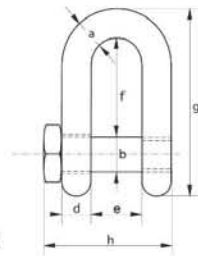
working load limit	diameter bow	diameter pin	diameter eye	width eye	width inside	length inside	width bow	length bow	length bolt	width nut	thickness nut	weight each
tons	a mm	b mm	c mm	d mm	e mm	f mm	g mm	h mm	i mm	j mm	k mm	kg
0.5	7	8	17	7	12	29	20	54	43	37	4	0.06
0.75	9	10	21	9	13.5	32	22	61	51	42	5	0.11
1	10	11	23	10	17	36.5	26	71	61	49	8	0.16
1.5	11	13	26	11	19	43	29	80	68	54	11	0.22
2	13.5	16	34	13.5	22	51	32	91	83	63	13	0.42
3.25	16	19	40	16	27	64	43	114	99	79	17	0.74
4.75	19	22	47	19	31	76	51	136	115	94	20	1.18
6.5	22	25	53	22	36	83	58	157	131	107	23	1.77
8.5	25	28	60	25	43	95	68	176	151	124	25	2.58
9.5	28	32	67	28	47	108	75	197	167	137	28	3.66
12	32	35	74	32	51	115	83	218	179	154	31	4.91
13.5	35	38	80	35	57	133	92	240	198	170	34	6.54
17	38	42	89	38	60	146	99	262	202	183	19	8.19
25	45	50	104	45	74	178	126	314	244	226	24	14.22
35	50	57	111	50	83	197	138	358	270	250	27	19.85
42.5	57	65	134	57	95	222	160	414	302	287	30	28.33
55	65	70	145	65	105	260	180	463	330	329	33	39.59
85	75	83	163	75	127	329	190	556	376	355	40	62

Holland Green Pin® Standard Shackles

荷兰 Green Pin® 卸扣



G-4151 D型卸扣
CHAIN SHACKLE WITH
SCREW COLLAR PIN



G-4151

- 材料 : 高强度钢, 等级6, 淬火及回火
- 安全系数 : 6
- 标准 : 符合欧洲EN 13889和美国联邦的性能要求Spec. RR-C-271 Type IVB Class 2, Grade A
- 表面 : 热浸镀锌
- 温度范围 : -20 °C至+200 °C
- 证明 : 这个产品可免费提供工厂证书, 基本的原材料证书、制造者测试证书和EC证书

- **Material** : bow and pin high tensile steel, Grade 6, quenched and tempered
- **Safety Factor** : MBL equals 6 x WLL
- **Standard** : EN 13889 and
meets performance requirements of US Fed. Spec. RR-C-271 Type IVB Class 2, Grade A
- **Finish** : hot dipped galvanized
- **Temperature Range** : -20 °C up to +200 °C
- **Certificates** : at no extra charges this product can be supplied with a works certificate, certificate of basic raw material, manufacturer test certificate and/or EC Declaration of Conformity

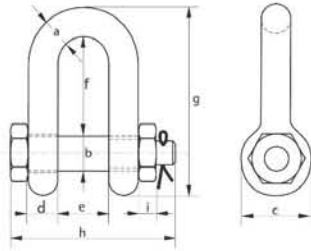
working load limit	diameter bow	diameter pin	diameter eye	width eye	width inside	length inside	length	length bolt	weight each
tons	a mm	b mm	c mm	d mm	e mm	f mm	g mm	h mm	kg
0.33	5	6	12.5	5	9.5	19	38	31	0.02
0.5	7	8	17	7	12	22	47	40	0.05
0.75	9	10	21	9	13.5	26	56	49	0.09
1	10	11	23	10	17	32	66	56	0.14
1.5	11	13	26	11	19	37	74	68	0.19
2	13.5	16	34	13.5	22	43	85	76	0.32
3.25	16	19	40	16	27	51	105	93	0.54
4.75	19	22	47	19	31	59	125	107	0.87
6.5	22	25	53	22	36	73	144	123	1.34
8.5	25	28	60	25	43	85	161	141	2.08
9.5	28	32	67	28	47	90	179	158	2.77
12	32	35	74	32	51	94	199	176	3.72
13.5	35	38	80	35	57	115	220	192	5.14
17	38	42	89	38	60	127	239	208	6.85
25	45	50	104	45	74	149	283	250	11.45
35	50	57	111	50	83	171	333	281	16.86
42.5	57	65	134	57	95	190	360	321	24.61
55	65	70	145	65	105	203	399	355	32.65

Holland Green Pin® Standard Shackles

荷兰 Green Pin® 卸扣



G-4153 D型安全卸扣
SAFETY CHAIN SHACKLE



G-4153

- 材料 : 高强度钢, 等级6, 淬火及回火
- 安全系数 : 6
- 标准 : 符合欧洲EN 13889和美国联邦的性能要求Spec. RR-C-271 Type IVB Class 3, Grade A
- 表面 : 热浸镀锌
- 温度范围 : -20 ° C至+200 ° C
- 证明 : 这个产品可免费提供工厂证书, 基本的原材料证书、制造者测试证书和EC证书

- **Material** : bow and pin high tensile steel, Grade 6, quenched and tempered
- **Safety Factor** : MBL equals 6 x WLL
- **Standard** : EN 13889 and
meets performance requirements of US Fed. Spec. RR-C-271 Type IVB Class 3, Grade A
- **Finish** : hot dipped galvanized
- **Temperature Range** : -20 °C up to +200 °C
- **Certificates** : at no extra charges this product can be supplied with a works certificate, certificate of basic raw material, manufacturer test certificate and/or EC Declaration of Conformity

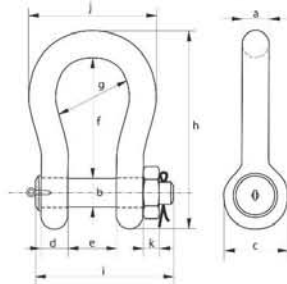
working load limit	diameter bow	diameter pin	diameter eye	width eye	width inside	length inside	length	length bolt	thickness nut	weight each
tons	a mm	b mm	c mm	d mm	e mm	f mm	g mm	h mm	i mm	kg
2	13.5	16	34	13.5	22	43	85	83	13	0.39
3.25	16	19	40	16	27	51	105	99	17	0.67
4.75	19	22	47	19	31	59	125	115	20	1.08
6.5	22	25	53	22	36	73	144	131	23	1.66
8.5	25	28	60	25	43	85	161	151	25	2.46
9.5	28	32	67	28	47	90	179	167	28	3.4
12	32	35	74	32	51	94	199	179	31	4.51
13.5	35	38	80	35	57	115	220	198	34	6.1
17	38	42	89	38	60	127	239	202	19	7.63
25	45	50	104	45	74	149	283	244	24	13.25
35	50	57	111	50	83	171	333	270	27	18.53
42.5	57	65	134	57	95	190	360	302	30	25.94
55	65	70	145	65	105	203	399	330	33	35.33
85	75	83	163	75	127	229	455	376	40	52.97

Holland Green Pin® Heavy Duty Shackles

荷兰Green Pin® 重型卸扣



P-3036 重型弓型安全卸扣
Heavy Duty Bow Shackles
with Safety Bolt



P-6036

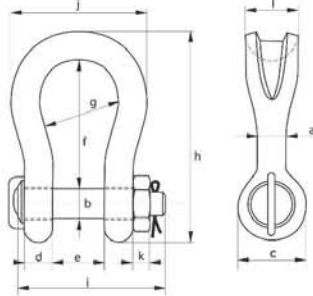
- 材料 : 高强度钢, 等级8, 淬火及回火
- 安全系数 : 5
- 表面 : 卸扣主体涂上银色, 销涂上绿色 (120吨卸扣为热浸镀锌)
- 证书 : 这个产品可免费提供工厂证书, 基本的原材料证书、制造者测试证书和EC证书
150吨或以上卸扣可提供劳氏认可负载证书
- 附注 : 内阔和内长会有+5%锻造公差

- **Material** : bow and pin alloy steel, Grade 8 quenched and tempered
- **Safety Factor** : MBL equals 5 x WLL
- **Finish** : shackle bow painted silver, pin painted green (120 tons shackle is hot dipped galvanized)
- **Certificates** : at no extra charges this product can be supplied with a works certificate, certificate of basic raw material, manufacturer test certificate, EC Declaration of Conformity and all shackles starting from 150 tons are supplied with a Lloyd's Register of Shipping Certificate on proof load
- **Note** : +5% forging tolerance on inside width and length

working load limit	diameter bow	diameter pin	diameter eye	width eye	width inside	length inside	width bow	length bow	length bolt	width bolt	thickness nut	weight each
tons	a mm	b mm	c mm	d mm	e mm	f mm	g mm	h mm	i mm	j mm	k mm	kg
120	95	95	215	89	144	381	238	667	440	416	50	110
150	105	108	245	100	165	400	275	702	490	485	60	160
200	120	130	288	110	175	500	290	854	520	530	60	235
250	130	140	308	115	200	540	305	921	560	565	65	285
300	140	150	335	120	200	600	305	1018	575	585	70	340
400	170	175	387	160	225	650	325	1137	690	665	70	560
500	180	185	410	160	250	700	350	1213	710	710	70	685
600	200	205	458	185	275	700	375	1267	810	775	70	880
700	210	215	468	200	300	700	400	1287	850	820	70	980
800	210	220	478	200	300	700	400	1294	870	820	70	1100
900	220	230	500	210	320	700	420	1320	920	860	70	1280
1000	240	240	530	210	340	700	420	1360	940	900	70	1460
1250	260	270	600	225	360	700	450	1430	1020	970	70	1990
1500	280	290	640	225	360	700	450	1480	1060	1010	70	2400

Holland Green Pin® Sling Shackles

荷兰Green Pin® 吊帶卸扣



P-6033

P-6033 吊帶用安全卸扣
Bow Shackles with
Safety Bolt for Sling

- 材料：高强度钢，等级8，淬火及回火
- 安全系数：5
- 表面：卸扣主体涂上银色，销涂上绿色
- 温度范围：-20 °C至+200 °C
- 证书：这个产品可免费提供工厂证书，基本的原材料证书、制造者测试证书和EC证书
可提供劳氏认可负载证书、MPI证书和US检验证书
- 附注：内阔和内长会有+5%锻造公差

- **Material** : bow and pin alloy steel, Grade 8, quenched and tempered
- **Safety Factor** : MBL equals 5 x WLL
- **Finish** : shackle bow painted silver, pin painted green
- **Temperature Range** : -20 °C up to +200 °C
- **Certification** : at no extra charges this product can be supplied with a works certificate, certificate of basic raw material, manufacturer test certificate, EC Declaration of Conformity and all shackles are supplied with a Lloyd's Register of Shipping Certificate on proof load, a MPI certificate and US inspection certificate
- **Note** ±5% forging tolerance on inside width and length

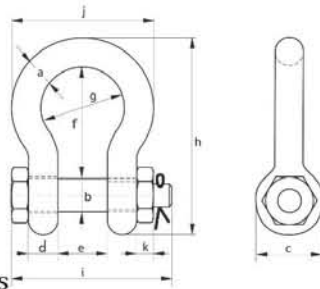
working load limit	diameter body	diameter pin	diameter eye	width eye	width inside	length inside	width bow	length bow	length bolt	width	thickness nut	bearing surface	weight each
tons	a	b	c	d	e	f	g	h	i	j	k	l	kg
	mm	mm	mm	mm	mm	mm	mm	mm	mm	mm	mm	mm	
40	55	51	109	45	80	200	140	331	252	235	38	97	22
55	60	57	115	55	85	250	160	396	304	270	45	100	50
75	70	70	140	70	105	290	186	467	359	345	54	120	67
125	85	80	155	85	130	365	220	569	428	410	64	150	105
150	94	95	180	89	140	390	250	627	441	455	50	170	160
200	110	105	200	100	150	480	276	744	474	508	50	205	220
250	126	120	228	110	170	540	300	842	528	600	60	240	320
300	135	134	245	122	185	600	350	926	594	620	70	265	350
400	160	160	295	145	220	575	370	964	686	715	80	320	635
500	170	180	330	160	250	680	450	1107	763	810	90	340	803
600	190	200	350	170	275	740	490	1207	828	913	100	370	980
700	200	215	392	190	300	750	540	1257	878	993	100	400	1260
800	218	230	420	200	325	850	554	1395	959	986	110	420	1430
900	242	255	466	220	350	850	584	1454	1040	1050	120	440	1650
1000	260	270	490	240	380	855	614	1497	1116	1176	120	460	2120
1250	285	300	510	260	430	930	650	1620	1193	1275	150	530	2400
1500	295	320	550	280	460	950	680	1710	1278	1350	160	560	3600

Holland Green Pin® Super Shackles

荷兰Green Pin® 超级卸扣



G-5263 高性能弓型安全卸扣
High Performance Bow Shackles
with Safety Bolt



G-5263

- 材料：高强度钢，等级8，淬火及回火
- 安全系数：5
- 标准：符合EN 13889及美国联邦的性能要求Spec. RR-C-271 Type IVA Class 3, Grade B
- 表面：热浸镀锌
- 证明：这个产品可免费提供工厂证书，基本的原材料证书、制造者测试证书和EC证书
150吨或以上卸扣可提供劳氏认可负载证书

- **Material** : bow and pin alloy steel, Grade 8, quenched and tempered
- **Safety Factor** : MBL equals 5 x WLL
- **Standard** : meets performance requirements of US Fed. Spec. RR-C-271 Type IVA Class 3, Grade B
- **Finish** : hot dipped galvanized (175 ton shackle is painted)
- **Certification** : at no extra charges this product can be supplied with a works certificate, certificate of basic raw material, manufacturer test certificate, EC Declaration of Conformity and all shackles starting from 150 tons are supplied with a Lloyd's Register of Shipping Certificate on proof load

working load limit	diameter bow	diameter pin	diameter eye	width eye	width inside	length inside	width bow	length	length bolt	width	thickness nut	weight each
tons	a mm	b mm	c mm	d mm	e mm	f mm	g mm	h mm	i mm	j mm	k mm	kg
3.3	13.5	16	34	13.5	22	51	32	91	81	63	11	0.44
5	16	19	40	16	27	64	43	114	99	79	17	0.79
7	19	22	47	19	31	76	51	136	115	94	20	1.26
9.5	22	25	53	22	36	83	58	157	131	107	23	1.88
12.5	25	28	60	25	43	95	68	176	151	124	25	2.78
15	28	32	67	28	47	108	75	197	167	137	28	3.87
18	32	35	74	32	51	115	83	218	179	154	31	5.26
21	35	38	80	35	57	133	92	240	198	170	34	6.94
30	38	42	89	38	60	146	99	262	203	183	19	8.79
40	45	50	104	45	74	178	126	314	244	226	24	15
55	57	57	133	50	83	197	138	365	286	264	27	22.0
85	70	70	159	65	105	260	180	468	342	339	33	42.0
120	83	83	171	75	127	329	190	564	400	371	40	70.0
150*	95	95	215	89	144	381	238	667	440	416	50	112
175*	105	108	245	100	165	400	275	702	490	485	60	160

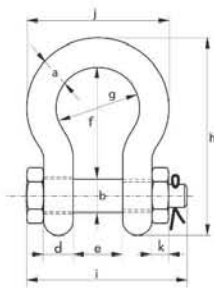
* = round headed bolt

Holland Green Pin® Polar Shackles

荷兰Green Pin® 低温卸扣



G-5163弓型安全低温卸扣
Bow Shackles with Safety Bolt,
For use under extreme climate
conditions



G-5163

- 材料 : 高强度钢, 等级8, 淬火及回火
- 安全系数 : 8
- 标准 : 符合EN 13889及美国联邦的性能要求Spec. RR-C-271 Type IVA Class 3, Grade B
- 表面 : 热浸镀锌
- 温度范围 : -40 ° C至+200 ° C
- 证明 : 这个产品可免费提供工厂证书, 基本的原材料证书、制造者测试证书和EC证书

- **Material** : bow and pin alloy steel, Grade 8, quenched and tempered
- **Safety Factor** : MBL equals 8 x WLL
- **Standard** : EN 13889 and
meets performance requirements of US Fed. Spec. RR-C-271 Type IVA Class 3, Grade B
- **Finish** : hot dipped galvanized
- **Temperature Range** : -40 °C up to +200 °C
- **Certification** : at no extra charges this product can be supplied with a works certificate, certificate of basic raw material, manufacturer test certificate and/or EC Declaration of Conformity
- **Note** : for shackles with WLL 55 and 85 tons the MBL equals 6 x WLL

working load limit	diameter bow	diameter pin	diameter eye	width eye	width inside	length inside	width bow	length	length bolt	width	thickness nut	weight each
tons	a	b	c	d	e	f	g	h	i	j	k	kg
	mm	mm	mm	mm	mm	mm	mm	mm	mm	mm	mm	
2	13.5	16	34	13.5	22	51	32	91	83	63	13	0.42
3.25	16	19	40	16	27	64	43	114	99	79	17	0.74
4.75	19	22	47	19	31	76	51	136	115	94	20	1.18
6.5	22	25	53	22	36	83	58	157	131	107	23	1.77
8.5	25	28	60	25	43	95	68	176	151	124	25	2.58
9.5	28	32	67	28	47	108	75	197	167	137	28	3.66
12	32	35	74	32	51	115	83	218	179	154	31	4.91
13.5	35	38	80	35	57	133	92	240	198	170	34	6.54
17	38	42	89	38	60	146	99	262	203	183	19	8.19
25	45	50	104	45	74	178	126	314	244	226	24	14.22
35	50	57	111	50	83	197	138	358	270	250	27	19.85
42.5	57	65	134	57	95	222	160	414	302	287	30	28.33
55	65	70	145	65	105	260	180	463	330	329	33	39.59
85	75	83	163	75	127	329	190	556	376	355	40	62





麥記國際香港有限公司
Mak Kee International H.K. Ltd.
www.makkee.com

HONG KONG 香港
TEL: 852 - 2396 4107
FAX: 852 - 2789 8323
EMAIL: sales@makkee.com

MACAO 澳門
TEL: 853 - 2826 3418 / 2826 3421
FAX: 853 - 2826 3245
EMAIL: sales.macao@makkee.com

BEIJING 北京
TEL: 86 - 10 - 6059 1573
FAX: 86 - 10 - 6059 1572
EMAIL: sales.bj@makkee.com

SHANGHAI 上海
TEL: 86 - 21 - 5228 1350 / 5228 1351
FAX: 86 - 21 - 6227 9179
EMAIL: sales.sh@makkee.com

GUANGZHOU 廣州
TEL: 86 - 20 - 8219 0995 / 8219 1518
FAX: 86 - 20 - 8217 2120
EMAIL: sales.gz@makkee.com

SHENZHEN 深圳
TEL: 86 - 755 - 8602 1550 / 2672 6673
FAX: 86 - 755 - 2672 6424
EMAIL: sales.sz@makkee.com